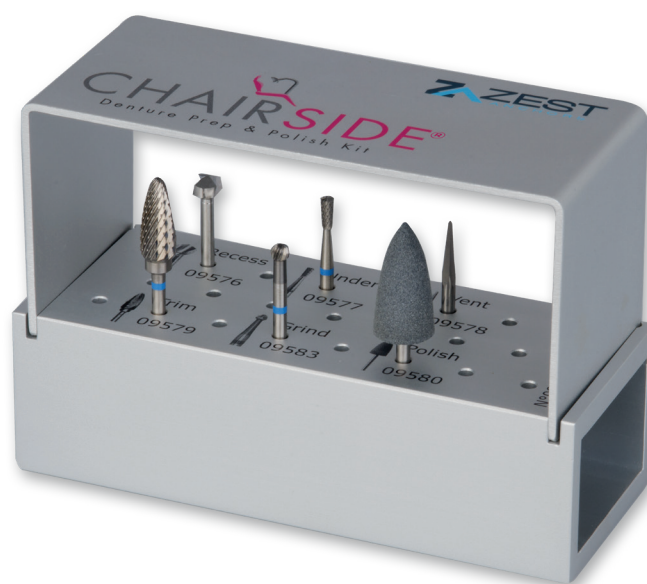




INTRODUCING A COMPREHENSIVE KIT DESIGNED  
**FOR THE EFFICIENT & ACCURATE**  
**PICK-UP OF DENTURE**  
**ATTACHMENT HOUSINGS**



---

## Picking-Up A Denture Attachment Housing? Pick Zest!

It is no secret that for more than 50 years, Zest Dental Solutions has been developing innovative products for overdenture applications. This dedication has led to product solutions that have enhanced outcomes for both clinicians and patients alike. Zest is continuing this innovative path with the **CHAIRSIDE® Product Portfolio** - a series of dental tools and materials that provide an **end-to-end solution** for full-arch implant prosthesis modification and processing.

The first product Zest introduced in the CHAIRSIDE Portfolio was CHAIRSIDE Attachment Processing Material – a pick-up material designed for ease of use and predictability when processing Denture Attachment Housings and other attachment components into overdentures. Continuing to refine the efficiency and accuracy of the process, Zest is pleased to introduce the latest advancement in the CHAIRSIDE Portfolio - the **CHAIRSIDE Denture Prep & Polish Kit** - all the instruments dental professionals need for the efficient and accurate pick-up of Denture Attachment Housings.

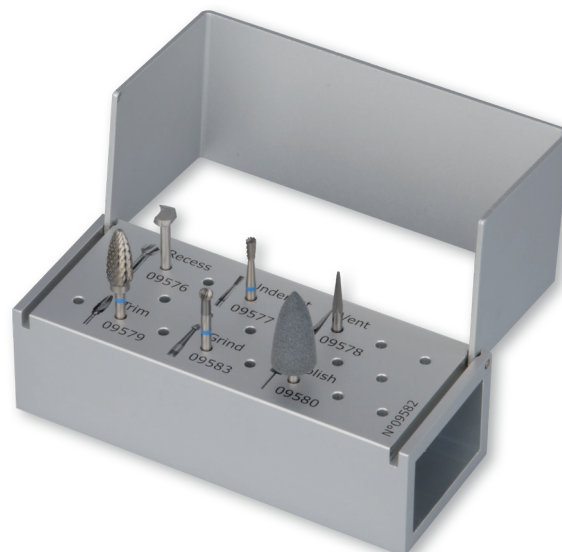
The CHAIRSIDE Product Portfolio, united with the LOCATOR® Attachment Systems, LOCATOR Overdenture Implant System and SATURNO® Products, provide clinicians with innovative full-arch implant solutions from a convenient and trusted source – Zest.

### The NEW CHAIRSIDE Prep & Polish Kit:

- A comprehensive kit consisting of Recess, Trim, Undercut, Grind and Vent Burs, as well as a Polisher, all of which are designed to address the most frequent overdenture preparation requirements.
- A unique to the market **CHAIRSIDE Recess Bur**, specifically designed by Zest, that quickly and easily prepares the exact size recess for the LOCATOR and SATURNO Denture Attachment Housings (Denture Caps).

"The CHAIRSIDE Denture Prep and Polish Kit is well organized which makes it easy for me to navigate through the denture preparation steps. The custom Recess Bur significantly cuts down on the time it takes me to create the appropriately sized recess for the LOCATOR denture attachment housings."

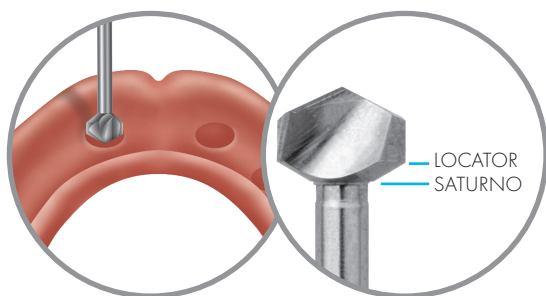
*Charles Mastrovich, DDS  
Escondido, CA*



---

## The CHAIRSIDE® Denture Prep & Polish Kit

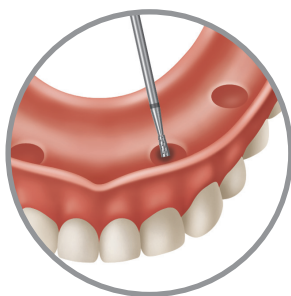
### For The Efficient And Accurate Pick-Up Of Denture Attachment Housings



#### CHAIRSIDE Recess Bur

##### Precise Recess Preparation

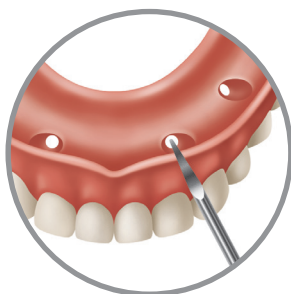
Use the CHAIRSIDE Recess Bur to create a space in the denture that is appropriately sized to provide the necessary clearance for the proper luting of Zest LOCATOR® and SATURNO® Denture Attachment Housings (Denture Caps). This efficient bur has distinct depth landmarks which indicate where to stop when drilling for each type of housing.



#### CHAIRSIDE Undercut Bur

##### Optimized Housing Retention

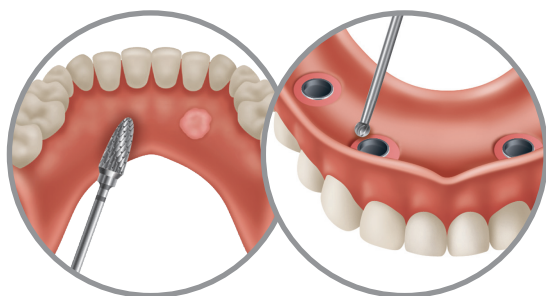
Use the CHAIRSIDE Undercut Bur to create an undercut in the recess which will enhance the mechanical retention of the Denture Attachment Housings.



#### CHAIRSIDE Vent Hole Bur

##### Simple Vent-Hole Creation

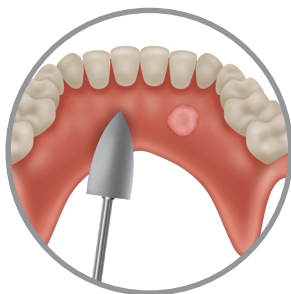
Use the CHAIRSIDE Vent Hole Bur to make a hole from the bottom of the recess through the lingual wall of the denture, which will enable excess CHAIRSIDE Attachment Processing Material to flow from the prosthesis. It will also increase visibility of the Denture Attachment Housings within the recess providing predictable attachment pickup.



#### CHAIRSIDE Trim & Grind Burs

##### Efficient Post-Pickup Prosthesis Adjustment

Use the CHAIRSIDE Trim Bur to remove excess CHAIRSIDE Attachment Processing Material and make modifications to the prosthesis as needed after the Denture Attachment Housings have fully cured. Use the CHAIRSIDE Grind Bur to remove excess CHAIRSIDE Attachment Processing Material around the Denture Attachment Housings, if needed.



#### CHAIRSIDE Polisher

##### Finishing and Polishing








Use the CHAIRSIDE Polisher to smooth the CHAIRSIDE Attachment Processing Material in and around the prosthesis.



# CHAIRSIDE®

Denture Prep & Polish Kit

## BUR SPECIFICATIONS & PRODUCT ORDERING INFORMATION

Image	Item Number	CHAIRSIDE® Bur	Recommended Speed & Motor Setting (RPM)	Maximum Speed & Motor Setting (RPM)
	09582	N/A	N/A	N/A
	09576	Recess	18,000 (High)	30,000 (High)
	09577	Undercut	20,000 (High)	50,000 (High)
	09578	Vent	18,000 (High)	50,000 (High)
	09579	Trim	20,000 (High)	35,000 (High)
	09583	Grind	20,000 (High)	35,000 (High)
	09580	Polisher (Packaged in 5 pack)	7,000 (Low)	12,000 (Low)

External cooling with air or water not recommended. Burs may generate heat; take care not to touch the tip immediately after use.

**Try the CHAIRSIDE Denture Prep & Polish Kit today!**

**Please call 800.262.2310**  
or visit **www.zestdent.com**



**ZEST DENTAL SOLUTIONS**  
2875 LOKER AVENUE EAST  
CARLSBAD, CA 92010  
USA

TEL: 800.262.2310  
FAX: 760.743.7975  
EMAIL: SALES@ZESTDENT.COM  
**WWW.ZESTDENT.COM**

DISTRIBUTED BY: